

J A S P E R D E S K

RELIABLE SOLUTIONS



Fuse Lunar
FUS04



Malted
FUS05



Azorean
FUS11



Cress
FUS02



Walnut
FUS10



Pristine
FUS13



Pepper
FUS07



Canter Quarry
CNR25



Sand
CNR12



Safari
CNR11



Ink
CNR19



Solace Pear
SOC18



Ivory
SOC12



Fossil
SOC09



Earth
SOC07



Cinder
SOC06



Indigo
SOC11



Mineral
SOC15



Habit Aspen
HAB01



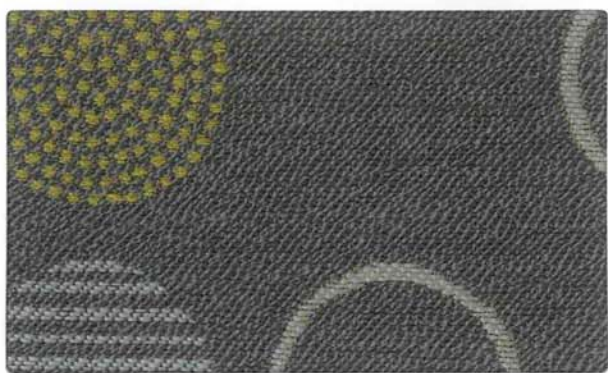
Kindle
HAB03



Pier
HAB04



Dune
HAB02



Amuse Alloy
AMU02



Quartz
AMU04



Poppy
AMU05



Admiral
AMU01



Mocha
AMU03



Cover Cloth Platinum
CVR08



Taupe
CVR11



Navel
CVR15



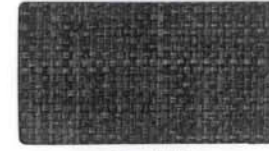
Sorrel
CVR10



Indigo
CVR14



Cyan
CVR02



Graphite
CVR04



Canter Storm
CNR26



Saddle
CNR10



Mica
CNR06



Onyx
CNR08



Origin Gaia
ORG22



Twine
ORG28



Arundel
ORG15



Eureka
ORG19



Poppy
ORG26



Sapphire
ORG10



Jet
ORG08



Current Birch
CUR01



Pecan
CUR06



Cadet
CUR02



Espresso
CUR04



Free Evening
FRE02



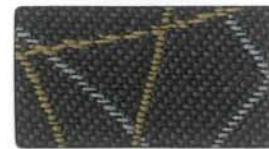
Pearl
FRE06



Platinum
FRE07



Cocoa
FRE01



Graphite
FRE03

Technical Information

Width - Pattern	Fiber Content & Backing	Finish	Abrasion (D.R.)	Light-fastness	Repeat	Cleaning Code
60" AMUSE ☘ ☒ ☼ ☙ ☆*	61% Post Consumer Recycled Polyester, 39% Polyester Acrylic Backing	Soil & Stain Resistant	50,000	(Cl. 4) 40 Hrs.	6 1/8" L 7 1/2" W	WS
54" CANTER ☘ ☒ ☼ ☙ ☆*	100% Polyurethane / PVC Free Polyester Backing	Anti-microbial, Anti-bacterial	240,000	(Cl. 4.5) 40 Hrs.		W BC (4:1)
59" COVER CLOTH ☘ ☒ ☼ ☙ ☆*	100% Polyester	Crypton®	200,000	(Cl. 4) 40 Hrs.		W BC (10:1)
56" CURRENT ☘ ☒ ☼ ☙ ☆*	100% Post Consumer Recycled Polyester Acrylic Backing	Soil & Stain Resistant	100,000	(Cl. 4) 40 Hrs.	13" L 7 1/4" W	WS
61" FREE ☘ ☒ ☼ ☙ ☆*	100% Post Consumer Recycled Polyester Acrylic Backing	Soil & Stain Resistant	100,000	(Cl. 4) 40 Hrs.	5 3/8" L 5" W	WS
54" FUSE ☘ ☒ ☼ ☙ ☆*	65% Post Industrial Recycled Polyester, 35% Post Consumer Recycled Polyester Latex Backing	Soil & Stain Resistant	100,000	(Cl. 4.5) 40 Hrs.		WS
54" HABIT ☘ ☒ ☼ ☙ ☆*	100% Post Consumer Recycled Polyester Acrylic Backing	Soil & Stain Resistant	50,000	(Cl. 4.5) 40 Hrs.	1 5/8" L 3" W	WS
58" ORIGIN ☘ ☒ ☼ ☙ ☆*	100% Polyester Acrylic Backing	Soil & Stain Resistant	282,000	(Cl. 4) 40 Hrs.		WS
55" SOLACE ☘ ☒ ☼ ☙ ☆*	49% Polyester, 41% Post Industrial Recycled Polyester, 10% Post Consumer Recycled Polyester Acrylic Backing	Soil & Stain Resistant	100,000	(Cl. 4) 40 Hrs.		WS

*ACT® Registered Certification Marks

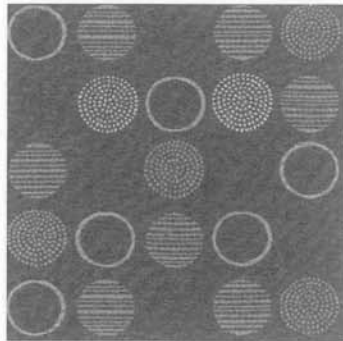
All Patterns in this Collection-
Meet California Bulletin 117 2013
Primary Application: Upholstery Seating

Cleaning Code Definitions-

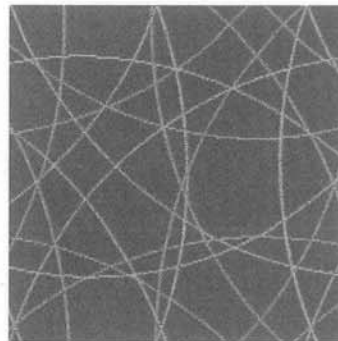
- W: Water-based foam or cleaner.
- WS: Water-based cleaning agents or foam.
- BC: Bleach Cleanable



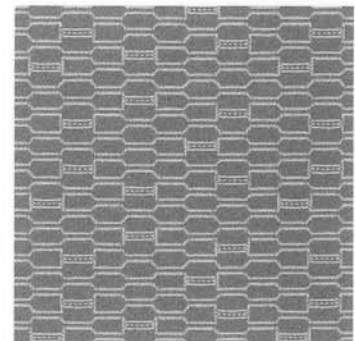
scan for current
textile grades



AMUSE



FREE



HABIT

JASPER DESK

225 Clay Street
P.O. Box 231
Jasper, Indiana 47547

800.365.7994 TOLL
812.482.4132 OFFICE
812.482.9552 FAX

JASPERDESK.COM

Issued in 2015
Please notice patterns, pricing, information and availability are subject to change
Contact Jasper Desk or fabric supplier for verification if issue date is beyond three years

JD.MT.RS.0515.1500

MOMENTUM
T E X T I L E S

800.366.6839

To order memo samples for project
use, please visit Momentum's
website at www.memosamples.com

5CLICKS

For additional Momentum graded
in fabrics with Jasper Desk please
visit www.jasperdesk.com

In 5 simple clicks, you can find hundreds
of pre-approved, in grade, and in stock fabrics.